



Newcombe Park

£995,000

Cosway Estates are pleased to offer for sale this charming well-presented and larger than average 4 double bedroom, 3 storey townhouse with a sweeping staircase leading to the front door with entrance to the reception level, and is situated in a tree-lined road a stones throw to Mill Hill Broadway's shops, restaurants, coffee shops and Thameslink train station. The property comprises of four spacious bedrooms, three bathrooms, two reception rooms and modern fitted kitchen. This property also benefits from a private rear garden and off-street parking. Sole Agent. Chain Free.

Viewing

Please contact our Mill Hill Office on 02089590011 if you wish to arrange a viewing appointment for this property or require further information.



4



3

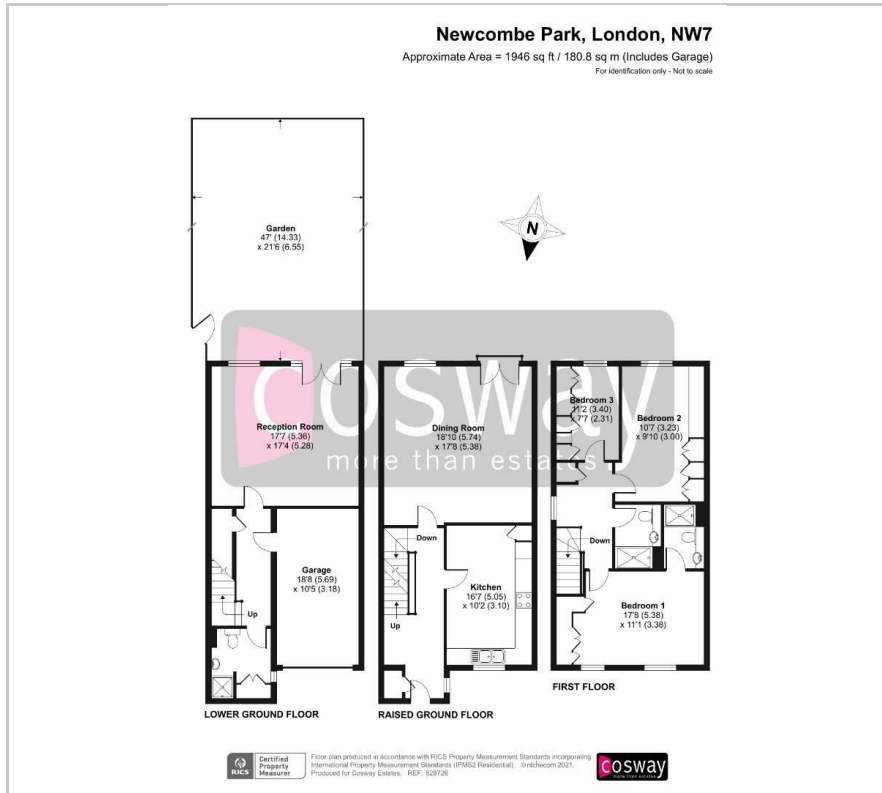


2



C

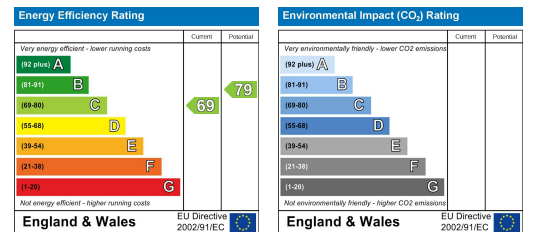
Floor Plan



Area Map



Energy Efficiency Graph



These particulars, whilst believed to be accurate are set out as a general outline only for guidance and do not constitute any part of an offer or contract. Intending purchasers should not rely on them as statements of representation of fact, but must satisfy themselves by inspection or otherwise as to their accuracy. No person in this firm's employment has the authority to make or give any representation or warranty in respect of the property.